



SILVER LAKE WATER & SEWER DISTRICT

RESERVOIR NO. #4 HEADQUARTERS DEMOLITION SLWSD PROJECT NO. 24-0010

GENERAL MANAGER

CURT BREES

DISTRICT ENGINEER

SCOTT SMITH, P.E.

BOARD OF COMISSIONERS

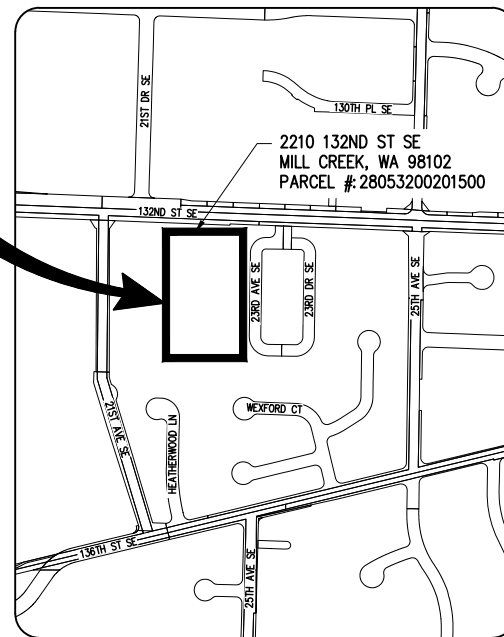
SHAUNA WILLNER

JOHN WARNER

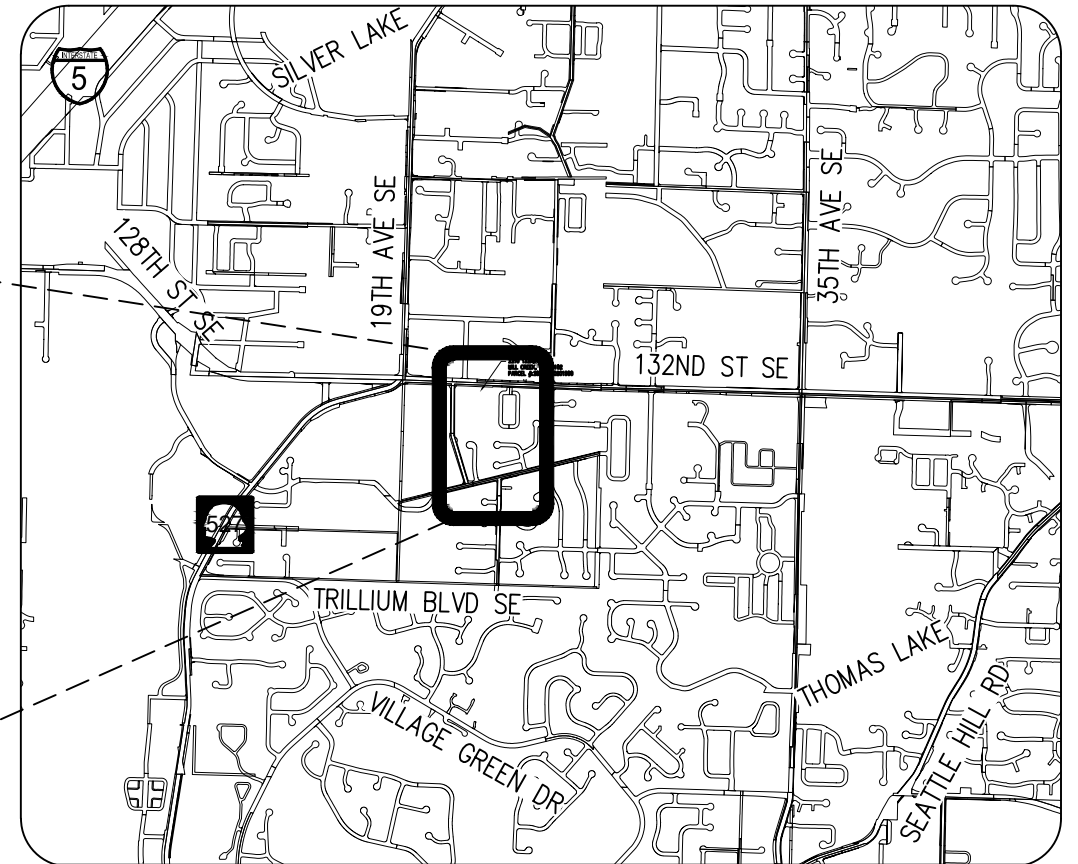
ANNE BACKSTROM

SHEET INDEX	
TITLE	SHT NO.
GENERAL	
COVER	1
DETAILS & ABBREVIATIONS	2
DETAILS	3
SITE PREPARATION & TESC	
PLAN	4
BUILDING DEMOLITION AND SITE PLAN	
PLAN	5

PROJECT LOCATION



PROJECT LOCATION
NOT TO SCALE



VICINITY MAP
NOT TO SCALE

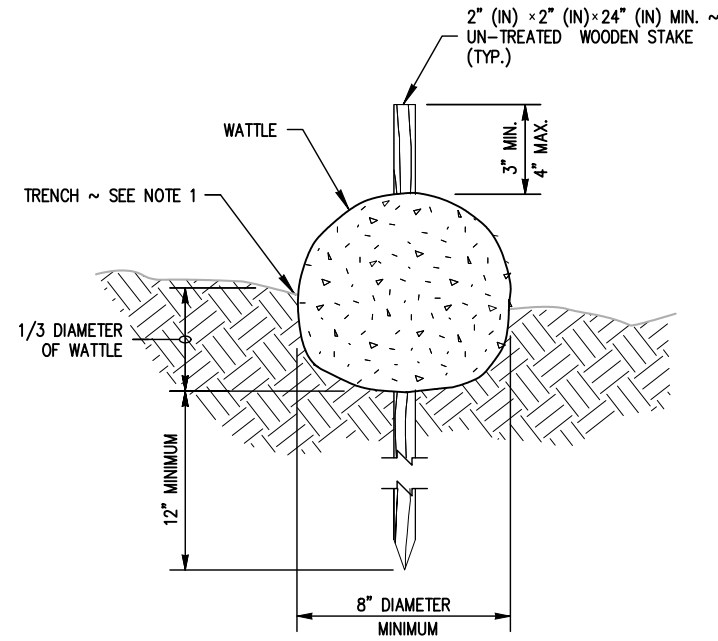
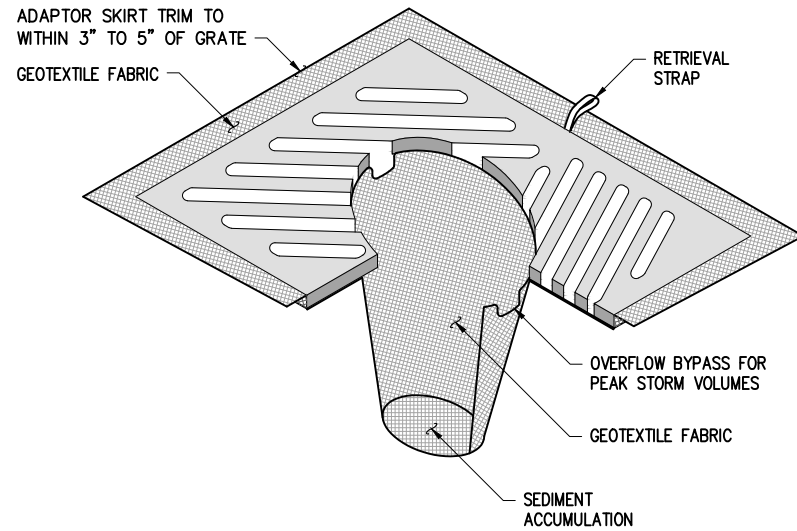


BID DOCUMENT
OCTOBER 2024

CALL 2 DAYS BEFORE YOU DIG
811



KPG PSOMAS
Seattle
3131 Elliott Avenue, Suite 400
Seattle, WA 98121 206.286.1640
Tacoma | Wenatchee | KPG.com



WATTLE SECTION DETAIL
NTS

NOTES:

1. INSERT SHALL BE INSTALLED PRIOR TO CLEARING AND GRADING ACTIVITY, OR UPON PLACEMENT OF A NEW CATCH BASIN.
2. SEDIMENT SHALL BE REMOVED FROM THE UNIT WHEN IT BECOMES HALF FULL.
3. SEDIMENT REMOVAL SHALL BE ACCOMPLISHED BY REMOVING THE INSERT, EMPTYING, AND RE-INSERTING IT INTO THE CATCH BASIN.
4. CATCH BASIN INSERTS SHALL BE USED FOR TEMPORARY STORMWATER TREATMENT DURING CONSTRUCTION. EXISTING CATCH BASINS SHALL BE EQUIPPED WITH INSERTS FOR SEDIMENT CONTROL DURING CONSTRUCTION AND RECONFIGURED IN NEWLY INSTALLED CATCH BASINS AS THE WORK PROGRESSES. EACH INSERT MAY BE REMOVED AND RE-INSTALLED ONLY ONCE, AND ONLY IF THE INSERT REMAINS INTACT AND IN FULL WORKING CONDITION, SUBJECT TO THE APPROVAL OF THE ENGINEER, AND IN ACCORDANCE WITH THE MANUFACTURER'S RECOMMENDATIONS. CATCH BASIN INSERTS REQUIRE AT LEAST WEEKLY INSPECTION, AND MAINTENANCE IF NEEDED.
5. CATCH BASIN INSERTS DO NOT MEET SPILL CONTAINMENT REQUIREMENTS AND CANNOT BE USED AS SUCH. METHODS OF POTENTIAL SPILL-CONTAINMENT SHALL BE ADDRESSED IN A TEMPORARY WATER POLLUTION/EROSION CONTROL PLAN.

CATCH BASIN INLET PROTECTION INSERT DETAIL
NTS

ABBREVIATIONS

AC	ASPHALT CONCRETE	MIC	MONUMENT IN CASE
ACP	ASPHALT CONCRETE PAVEMENT	MJ	MECHANICAL JOINT
ADA	AMERICANS WITH DISABILITIES ACT	MON	MONUMENT
AP	ANGLE POINT	N	NORTH OR NORTHING
APPROX	APPROXIMATE	NAVD	NORTH AMERICAN VERTICAL DATUM
BLDG	BUILDING	NO	NUMBER
CB	CATCH BASIN	NTS	NOT TO SCALE
CCP	CEMENT CONCRETE PAVEMENT	OC	ON CENTER
CDF	CONTROLLED DENSITY FILL	OD	OUTSIDE DIAMETER
CHLK	CHAINLINK	PC	POINT OF CURVE
CL	CENTERLINE	PCC	POINT OF COMPOUND CURVATURE
CL	CLASS	PCCP	PERVIOUS CEMENT CONCRETE PAVEMENT
CO	CLEANOUT	PI	POINT OF INTERSECTION
CO_	CITY OF _	POB	POINT OF BEGINNING
COL	COLUMN CONC CONCRETE	POE	POINT OF ENDING
CSBC	CRUSHED SURFACING BASE COURSE	PRC	POINT OF REVERSE CURVATURE
CSTC	CRUSHED SURFACING TOP COURSE	PT	POINT OF TANGENT
DI	DUCTILE IRON	PVC	POLYVINYL CHLORIDE OR
DIA	DIAMETER		POINT OF VERTICAL CURVATURE
DW	DRIVEWAY	PVT	POINT OF VERTICAL TANGENT
E	EAST OR EASTING	PVI	POINT OF VERTICAL INTERSECTION
EA	EACH	R	RADIUS
ELEV	ELEVATION	ROW	RIGHT OF WAY
EOP	EDGE OF PAVEMENT	RT	RIGHT
EW	EACH WAY EXIST EXISTING	S	SLOPE OR SOUTH
FF	FINISHED FLOOR	SD	STORM DRAIN
FL	FLOW LINE	SDMH	STORM DRAIN MANHOLE
FO	FIBER OPTIC	SE	SOUTHEAST
FOC	FACE OF CURB	SHT	SHEET
HMA	HOT MIX ASPHALT	SLWSD	SILVER LAKE WATER & SEWER DISTRICT
HORIZ	HORIZONTAL	SQ	SQUARE
HP	HIGH POINT	SS	SANITARY SEWER
ID	INSIDE DIAMETER	SSMH	SANITARY SEWER MANHOLE
IE	INVERT ELEVATION	ST	STREET
IN	INCH/INCHES	STA	STATION
JB	JUNCTION BOX	STD	STANDARD
L	LENGTH LT LEFT	STCR	STRUCTURE
LF	LINEAR FEET	SW	SOUTHWEST
LP	LOW POINT	TYP	TYPICAL
MAX	MAXIMUM	VERT	VERTICAL
MIN	MINIMUM	W	WEST
MH	MANHOLE	YD	YARD DRAIN

K:\SILVER LAKE WATER & SEWER DISTRICT\21063 - On-Call\21063W6-HQ_Demo\CADD\SheetFiles\21063W6LEG.dwg 10/9/2024 2:42 PM

NO.	DATE	BY	APPR.	REVISIONS

Approved By		21063W6LEG.dwg
ENGINEERING MANAGER	DATE	AJC 10/24
DESIGNED BY	DATE	AJC 10/24
PROJECT MANAGER	DATE	AJC 10/24
DRAWN BY	DATE	SOD 10/24
PROJECT ENGINEER	DATE	CHECKED BY



KPG PSOMAS
Seattle
3131 Elliott Avenue, Suite 400
Seattle, WA 98121 206.286.1640
Tacoma | Wenatchee | KPG.com

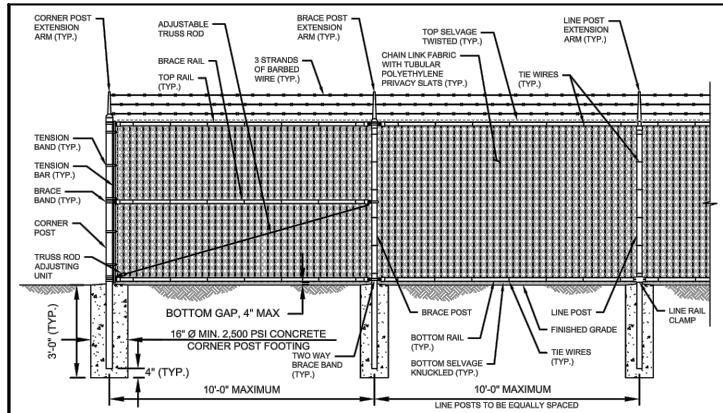
BID DOCUMENT



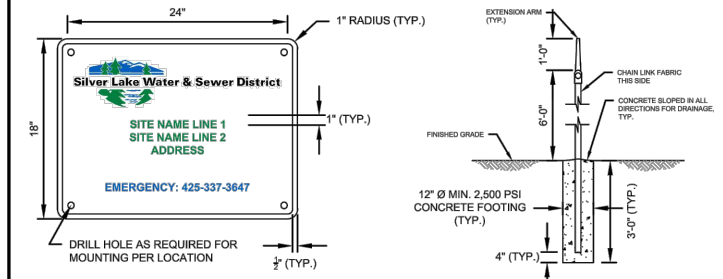
SILVER LAKE WATER & SEWER DISTRICT
RESERVOIR NO. #4 HEADQUARTERS DEMOLITION

GENERAL DETAILS & ABBREVIATIONS	
KPG PROJ. No. 21063W6	SHT <u>2</u> OF <u>5</u>

K:\SILVER LAKE WATER & SEWER DISTRICT\21063 - On-Call\21063W6-HQ Demo\CADD\SheetFiles\21063W6LEG.dwg 10/19/2024 2:42 PM



ELEVATION VIEW FROM SITE INTERIOR



TYPICAL SITE SIGN

TYPICAL SITE SIGN NOTES:

- MATERIAL: 0.080 FLAT ALUMINUM WITH HIGH INTENSITY PRISMATIC GRADE REFLECTIVE SHEETING WITH ROUNDED CORNERS.
- FASTEN TO SITE GATE(S) FENCING WITH SIGN MOUNTING BRACKETS AND CARRIAGE BOLTS.

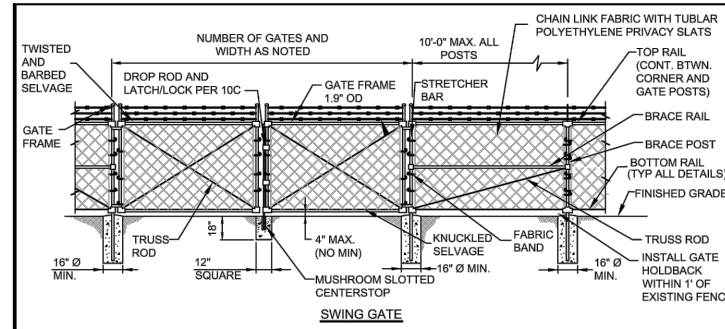
FENCE NOTES:

- SEE DETAIL G100 FOR FENCE & GATE NOTES.

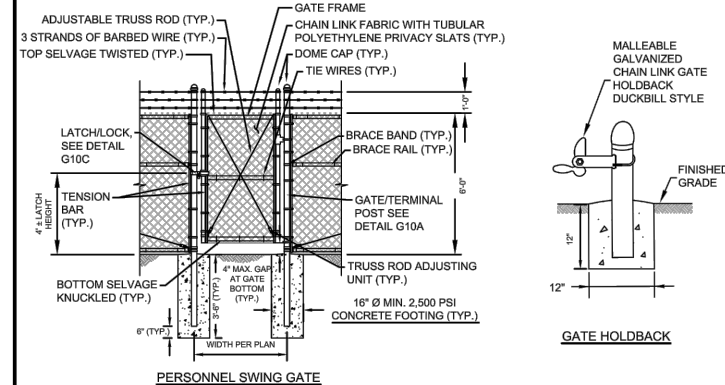
Silver Lake Water & Sewer District

TYPICAL FENCE

DATE: 12-2023 DWG: G10A



SWING GATE



PERSONNEL SWING GATE

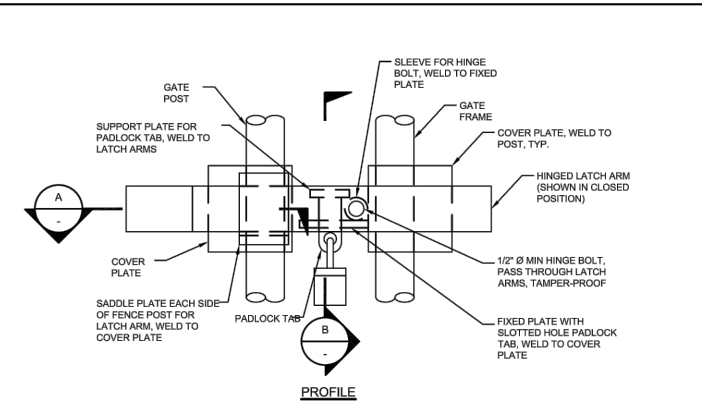
GATE NOTES:

- SEE DETAIL SHEET G100 FOR FENCE AND GATE NOTES.

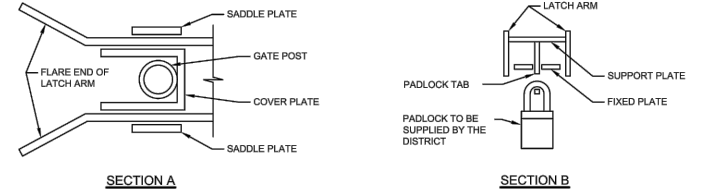
Silver Lake Water & Sewer District

SWING GATE

DATE: 12-2023 DWG: G10B



PROFILE



SECTION A SECTION B

NOTES:

- USE 1/4\"/>
- SWING GATE LATCH SHALL BE STRONG ARM STYLE SUITABLE FOR DOUBLE SWING GATE OR SINGLE SWING GATE AS APPLICABLE.
- WELDED JOINTS SHALL BE PROTECTED BY APPLYING ZINC-RICH PAINT IN ACCORDANCE WITH ASTM PRACTICE A780.
- ALL COMPONENTS SHALL BE HOT DIPPED GALVANIZED GALVANIZED AND THEN RECEIVE A MINIMUM OF 3 MILS BLACK TGIC POLYESTER POWDER COAT AS APPLIED BY POWDER COAT NORTHWEST, OR APPROVED EQUAL. FIELD TOUCHUP COATINGS AS REQUIRED.

Silver Lake Water & Sewer District

SWING GATE STRONG ARM HATCH/LOCK

DATE: 12-2023 DWG: G10C

- NOTES:**
- ALL POSTS, RAILS, FENCE FABRIC, FITTINGS, FASTENERS, AND FABRIC TIES SHALL BE HOT DIPPED GALVANIZED.
 - INSTALL CORNER POSTS WHERE HORIZONTAL ALIGNMENT CHANGES 30° OR MORE AND ALL OTHER LOCATIONS AS REQUIRED.
 - PROVIDE BRACE RAIL BETWEEN END POSTS AND LINE POSTS, LENGTHS AS REQUIRED.
 - PROVIDE ALL-BLACK FINISH OVER STANDARD GALVANIZED FINISH: POWDER-COATED EPOXY ON POSTS, RAILS, AND FITTINGS; FUSION-BONDED VINYL ON WIRE FABRIC.
 - FENCE FABRIC SHALL BE 3-1/2"x5' MESH, 9 GA GALV. WIRE, WITH FACTORY INSTALLED FLAT TUBULAR POLYETHYLENE SLATS (BLACK), VIEWGUARD BY SECURITY CONTRACTOR SERVICES, INC. OR EQUAL.
 - PROVIDE GALV IRON, MUSHROOM TYPE, SLOTTED CENTERSTOP FOR DOUBLE GATE DROP ROD. EMBED IN 12" DIAM X 18" D CONCRETE FOUNDATION.
 - WIRE TIES, HOG RINGS, RAILS, POSTS, AND BRACES SHALL BE CONSTRUCTED ON THE SECURE SIDE OF FENCE ALIGNMENT. CHAIN LINK FABRIC SHALL BE PLACED ON THE SIDE OPPOSITE THE SECURED AREA.
 - EXTEND ASPHALT PAVEMENT APPROXIMATELY 6' BEYOND FENCE WHERE FENCE IS LOCATED AT EDGE OF PAVEMENT, TYP.
 - UNLESS OTHERWISE APPROVED BY THE DISTRICT, INSTALL FENCE POSTS AFTER SITE PAVING IS COMPLETE.
 - CONCRETE SHALL BE MINIMUM 2500 PSI AT 28 DAYS.
 - UNLESS OTHERWISE APPROVED BY THE DISTRICT, PROVIDE BLACK BARBED WIRE TWISTED STRANDS AND VERTICAL EXTENSION ARMS ON ALL POSTS IF ALLOWED BY THE LAND USE AGENCY. TERMINATE BARBED WIRE AT EXTENDED CORNER AND GATE POSTS.

FENCE & GATE COMPONENT SIZING TABLE	
FENCE/GATE COMPONENT	DIAMETER (INCHES)
PULL POSTS	2 - 7/8
LINE POSTS	2 - 3/8
CORNER POSTS	2 - 7/8
PERSONNEL GATE POSTS	2 - 7/8
VEHICLE GATE POSTS	4
TOP, BOTTOM, INTERMEDIATE, & BRACE RAILS	1 - 5/8
GATE FRAME	1 - 7/8

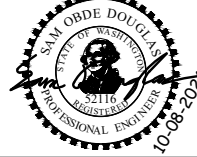
Silver Lake Water & Sewer District

FENCE AND GATE NOTES

DATE: 12-2023 DWG: G10D

NO.	DATE	BY	APPR.	REVISIONS

Approved By		21063W6LEG.dwg
ENGINEERING MANAGER	DATE	FILENAME
PROJECT MANAGER	DATE	AJC 10/24
PROJECT ENGINEER	DATE	DESIGNED BY
		AJC 10/24
		DRAWN BY
		SOD 10/24
		CHECKED BY



KPG PSOMAS

Seattle
3131 Elliott Avenue, Suite 400
Seattle, WA 98121 206.286.1640
Tacoma | Wenatchee | KPG.com

BID DOCUMENT

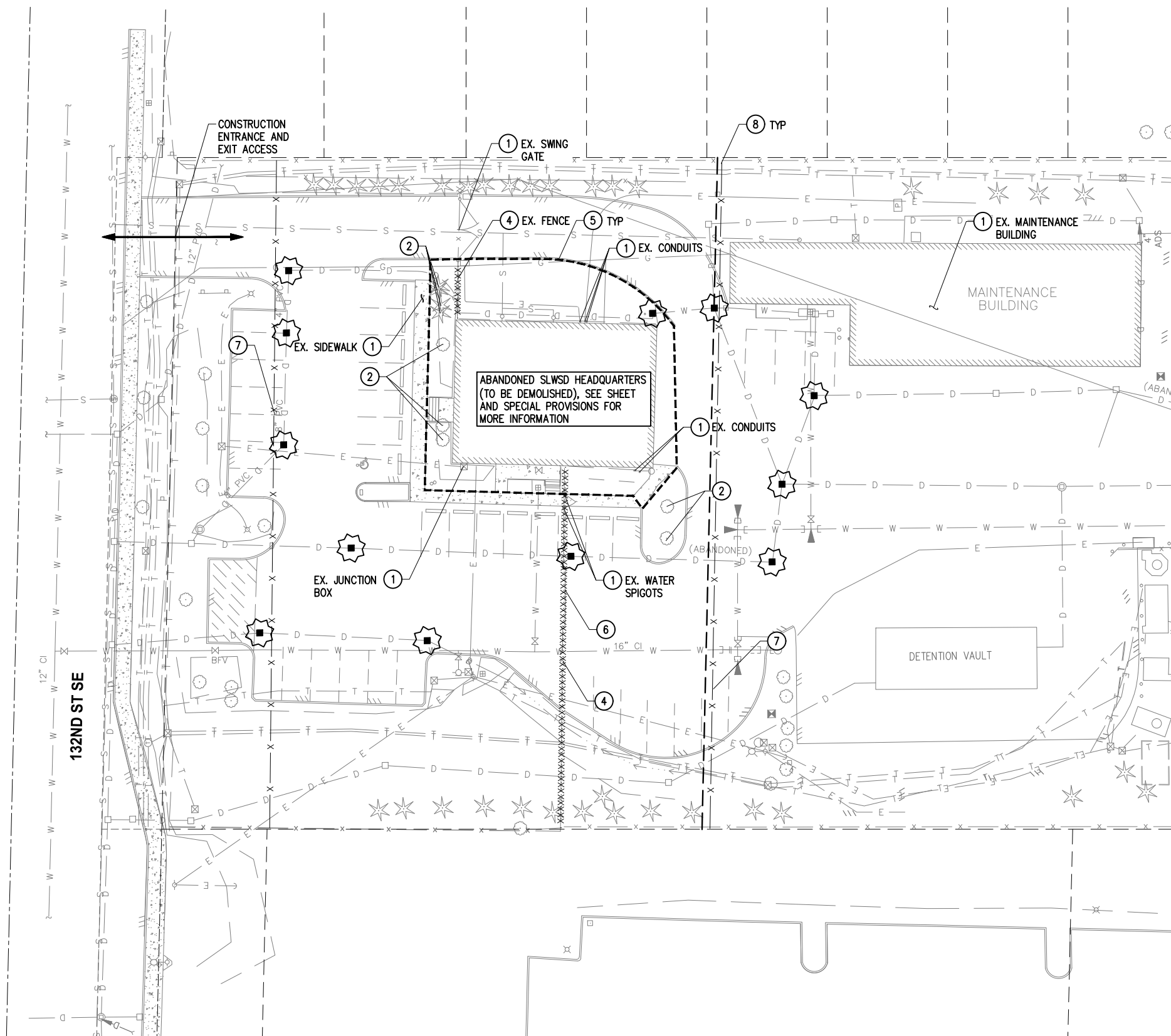


SILVER LAKE WATER & SEWER DISTRICT
RESERVOIR NO. #4 HEADQUARTERS
DEMOLITION

GENERAL DETAILS

KPG PROJ. No. 21063W6	SHT <u>3</u> OF <u>5</u>
-----------------------	--------------------------

ONGOING SECURITY ISSUES AND THEFT HAVE OCCURRED ON-SITE DESPITE FENCING AND SECURITY CAMERAS OPERATED BY THE DISTRICT. SECURE STORAGE OF CONTRACTOR'S EQUIPMENT AND MATERIALS IS THE RESPONSIBILITY OF THE CONTRACTOR.



GENERAL NOTES

1. THIS PLAN HAS BEEN PREPARED FOR THE CONTRACTOR'S CONVENIENCE IN LOCATING, PROTECTING, AND AVOIDING CONFLICTS WITH EXISTING UTILITIES. IT IS BASED UPON BEST AVAILABLE INFORMATION AND IS NOT NECESSARILY ACCURATE OR COMPLETE.
2. CONTRACTOR SHALL PROTECT EXISTING FEATURES AND UTILITIES NOT DESIGNATED FOR REMOVAL.
3. CONTRACTOR SHALL FURNISH AND INSTALL INLET PROTECTION AS SHOWN ON THE PLANS. CONTRACTOR MAY ELECT TO INSTALL WATTLE EROSION CONTROL PER WSDOT STD SPECIFICATION 9-14.6(5) AT DEMOLITION PERIMETER AS NEEDED TO MINIMIZE SEDIMENT MIGRATION INTO STREAMS AND STORM DRAINAGE SYSTEMS.
4. COORDINATE TESC FEATURES WITH SLWSD CESCL'S CHRIS STECHER (CSTECHER@SLWSD.COM) OR SCOTT SMITH (SSMITH@SLWSD.COM)

CONSTRUCTION NOTES

- 1 PRESERVE AND PROTECT.
- 2 PROTECT EXISTING TREE.
- 4 REMOVE FENCE.
- 5 INSTALL WATTLE, AS NEEDED, PER DETAIL, SHEET 2.
- 6 REMOVE EX. SLIDING GATE.
- 7 CONTRACTOR SHALL INSTALL AND MAINTAIN TEMPORARY FENCING (6-FT, BLACK SCREEN) DURING COMPLETE PROJECT.
- 8 CONNECT AND SECURE TEMPORARY FENCING TO EXISTING PERMANENT FENCING SUCH THAT NO GAPS EXIST.

LEGEND

- INLET PROTECTION
- REMOVE EX. FENCE
- WATTLE
- TEMPORARY FENCING

K:\SILVER LAKE WATER & SEWER DISTRICT\21063 - On-Call\21063W6-HQ Demo\CADD\SheetFiles\21063W6SP01.dwg 10/9/2024 2:43 PM

NO.	DATE	BY	APPR.	REVISIONS

Approved By		21063W6SP01.dwg
ENGINEERING MANAGER	DATE	FILENAME
PROJECT MANAGER	DATE	AJC 10/24
PROJECT ENGINEER	DATE	DESIGNED BY
		AJC 10/24
		DRAWN BY
		SOD 10/24
		CHECKED BY



KPG PSOMAS
 Seattle
 3131 Elliott Avenue, Suite 400
 Seattle, WA 98121 206.286.1640
 Tacoma | Wenatchee | KPG.com

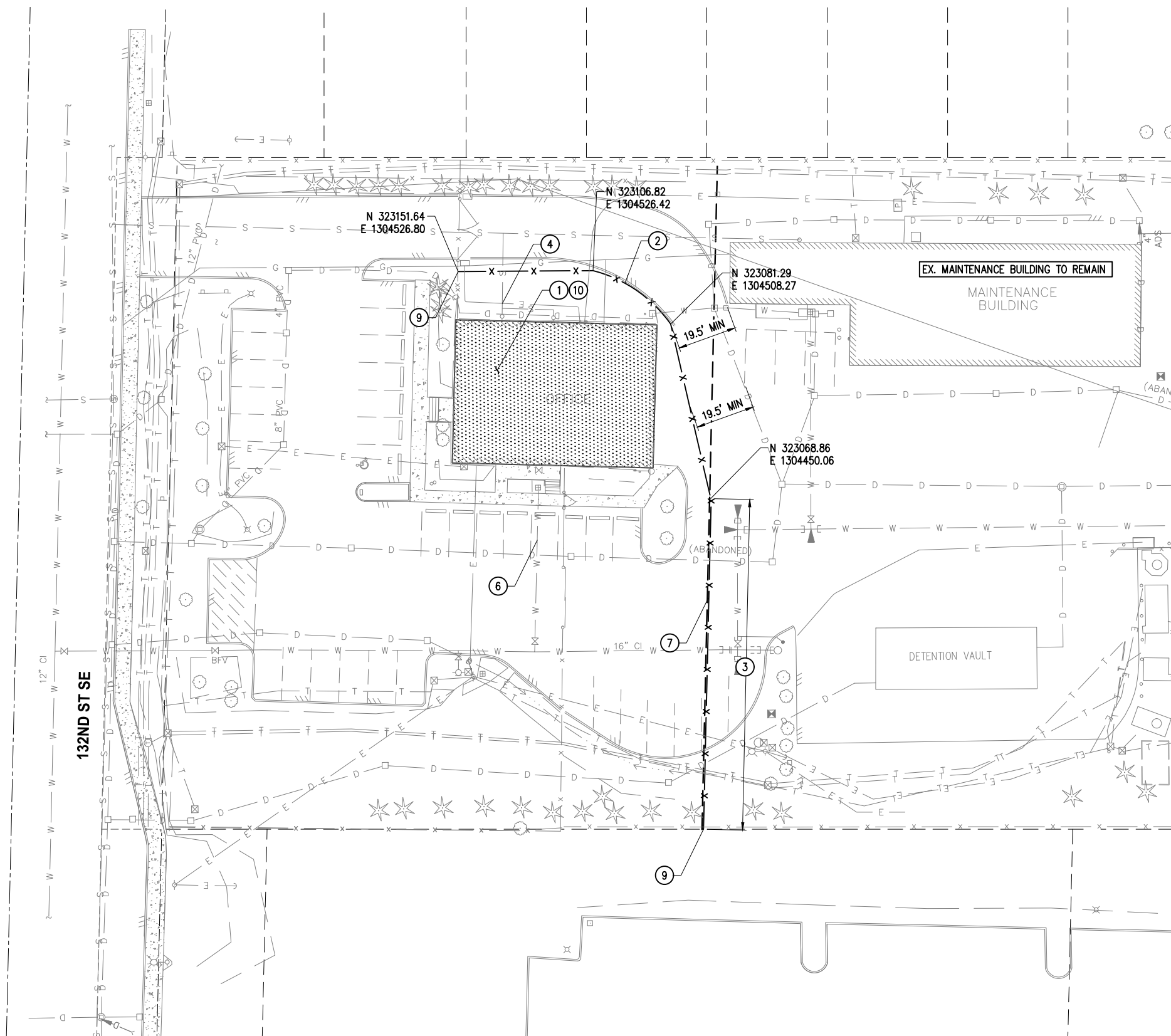
BID DOCUMENT



**SILVER LAKE WATER & SEWER DISTRICT
 RESERVOIR NO. #4 HEADQUARTERS
 DEMOLITION**

SITE PREPARATION & TESC PLAN	
KPG PROJ. No. 21063W6	SHT <u>4</u> OF <u>5</u>

ONGOING SECURITY ISSUES AND THEFT HAVE OCCURRED ON-SITE DESPITE FENCING AND SECURITY CAMERAS OPERATED BY THE DISTRICT. SECURE STORAGE OF CONTRACTOR'S EQUIPMENT AND MATERIALS IS THE RESPONSIBILITY OF THE CONTRACTOR.



GENERAL NOTES

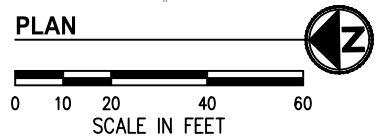
- SEE APPENDIX B FOR PUGET SOUND CLEAN AIR AGENCY (PSCAA) DEMOLITION NOTIFICATION. THE CONTRACTING AGENCY (SLWSD) WILL OBTAIN AND PROVIDE TO THE CONTRACTOR A COMPLETED CITY OF MILL CREEK DEMOLITION PERMIT AND A PSCAA DEMOLITION PERMIT PRIOR TO NOTICE TO BID AWARD. CONTRACTOR SHALL ADHERE TO PERMIT AND NOTIFICATION REQUIREMENTS.
- CONTRACTOR SHALL COORDINATE WITH AND CONTACT SNOHOMISH COUNTY PUD, PSE, VERIZON, AND COMCAST REPRESENTATIVES TO REMOVE POWER AND DISCONNECT POWER, GAS, COMMUNICATION LINES AND ANY OTHER UTILITY DISCOVERED PRIOR TO BEGINNING OF DEMOLITION.
- SLWSD (OTHERS) TO CUT, CAP AND ABANDON WATER AND SANITARY SEWER SERVICES. COORDINATE WITH SLWSD FOR WATER METER SHUT-OFF AND REMOVAL/ABANDONMENT AS NECESSARY.
- CUT EXPOSED REBAR, ANCHORS, EMBEDS FLUSH WITH SURROUNDING SURFACE, UNLESS OTHERWISE NOTED. GRIND THE CUT AREA WITH THE SURROUNDING SURFACE SMOOTH.
- THE PRESENCE OF HAZARDOUS MATERIALS, INCLUDING ASBESTOS, HAS BEEN SURVEYED. NO ASBESTOS CONTAINING MATERIALS (ACM) WERE FOUND ON THE PROPERTY DURING INSPECTION. INSPECTION WAS NOT PERFORMED ON STRUCTURE EXTERIOR OR ROOF. SEE APPENDIX B FOR ASBESTOS SURVEY REPORT. IF ACM ARE DISCOVERED DURING DEMOLITION CONTRACTOR TO COORDINATE WITH ABATEMENT SPECIALIST AS DIRECTED BY SLWSD.
- DEMOLITION SHALL BE IN ACCORDANCE WITH WASHINGTON ADMINISTRATIVE CODE (WAC) SECTION 296-155-774 TO 296-155-825.

CONSTRUCTION NOTES

- REMOVE AND DISPOSE OF EX. BUILDING TO THE EXISTING CONCRETE SLAB. CONCRETE SLAB SHALL BE LEFT EXPOSED UPON COMPLETION. SEE SPECIAL PROVISIONS
- INSTALL NEW BLACK VINYL COATED CHAIN LINK FENCE PER SLWSD DETAILS G10A AND G10D, SHEET 3.
- CONTRACTOR SHALL SURVEY AND MARK PROPERTY LINE. INSTALL NEW BLACK VINYL COATED CHAIN LINK FENCE PER SLWSD DETAILS, SHEET 3. FENCE POSTS SHALL BE LOCATED 4" SOUTH OF PROPERTY LINE AND FENCE SHALL BE INSTALLED WITHIN SOUTHERN PROPERTY.
- CUT AND CAP SIDE SEWER SERVICE IN SOFTSCAPE (BY OTHERS).
- CUT AND CAP WATER SERVICE IN SOFTSCAPE (BY OTHERS).
- INSTALL NEW CHAIN LINK SWING GATE PER SLWSD DETAIL G10B, G10C, AND G10D, SHEET 3. CENTER OF GATE SHALL MATCH LOCATION OF EXISTING CENTER OF GATE. GATE SWINGS SHALL ALLOW FOR AT LEAST A 90 DEGREE OPENING AND NOT INTERFERE WITH CURBS
- CONNECT NEW FENCE TO EXISTING FENCE.
- UPON COMPLETION OF DEMOLITION WORK AND CONCRETE SLAB EXPOSURE, CONTRACTOR SHALL FULLY CLEAN SITE OF ALL DEBRIS AND FIELD VERIFY IF ANY FOUNDATION HOLES EXIST AND CAP WITH CONCRETE.

LEGEND

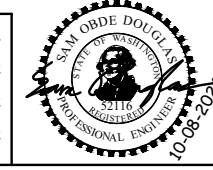
- BUILDING DEMOLITION
- NEW CHAIN LINK FENCE



K:\SILVER LAKE WATER & SEWER DISTRICT\21063 - On-Call\21063W6-HQ Demo\CADD\SheetFiles\21063W6DEM001.dwg 10/9/2024 2:43 PM

NO.	DATE	BY	APPR.	REVISIONS

Approved By		21063W6DEM001.dwg
ENGINEERING MANAGER	DATE	AJC 10/24
PROJECT MANAGER	DATE	AJC 10/24
PROJECT ENGINEER	DATE	SOD 10/24
	CHECKED BY	DATE



KPG PSOMAS
 Seattle
 3131 Elliott Avenue, Suite 400
 Seattle, WA 98121 206.286.1640
 Tacoma | Wenatchee | KPG.com

BID DOCUMENT



**SILVER LAKE WATER & SEWER DISTRICT
 RESERVOIR NO. #4 HEADQUARTERS
 DEMOLITION**

BUILDING DEMOLITION AND SITE PLAN PLAN	
KPG PROJ. No. 21063W6	SHT <u>5</u> OF <u>5</u>